



New Faculty Orientation Office of Research

August 18, 2015

Dr. Christopher J. Keane

Vice President for Research

Professor of Physics

chris.keane@wsu.edu



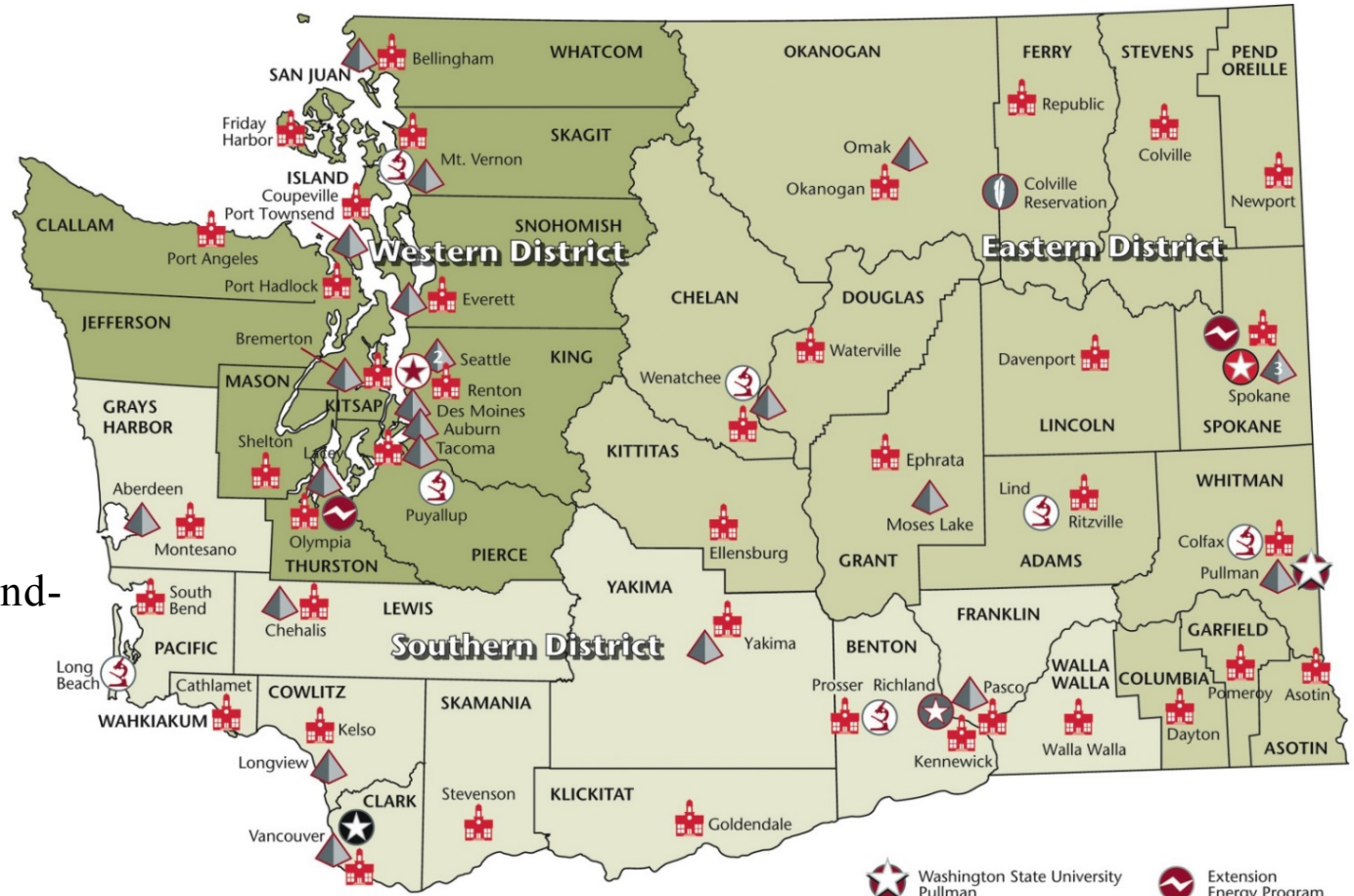
WSU Research Overview

- WSU is a major research university.
 - NSF HERD: Total Rank: 68 (\$341.1M), Federal Rank: 85 (\$134.3M)
 - Ranked 11 in Agricultural Sciences R&D Expenditures
 - RU/VH Carnegie Ranking: Research Universities/Very High (research activity)
 - Over 7,000 publications in the Scopus Database from 2012-2014, with over 27,000 citations
 - WSU is known for:
 - Washington Apples, Cougar Gold, Washington Wines, but so much more....
 - Plant and Agricultural Sciences
 - Materials Science
 - Biofuels and Bioproducts
 - Human and Animal Health
 - National Security
 - Opportunity and Equity
 - Where do we have impact?....



Serving Washington and the World

Founded in 1890 in Pullman, WSU is Washington's original land-grant university, with a mission of improving quality of life



WASHINGTON STATE UNIVERSITY
EXTENSION
World Class. Face to Face.

- Extension County Office
- Washington State University Spokane
- Washington State University West
- Washington State University Tri-Cities
- Research and Extension Centers/Units
- Washington State University Vancouver
- Washington State University Pullman
- Washington State University West
- Washington State University Tri-Cities
- Extension Energy Program
- Federally-Recognized Tribes Extension Program
- Small Business Development Centers/Partnerships



Where We're Going: Advancing WSU Research, Scholarship, and Creativity are Major Goals in the WSU Strategic Plan

Strategic Plan 2014-2019

President Elson S. Floyd, Ph.D.



- Plan tasks the VPR to “identify areas of research excellence and emerging areas requiring additional investment to achieve national and international prominence.”
- Dr. Dan Bernardo and I led a “120-Day Study on the WSU Research Enterprise” to address this charge



The 120-Day Research Study



ADVANCING RESEARCH,
INNOVATION, AND CREATIVITY

120-DAY STUDY OF THE WSU RESEARCH ENTERPRISE

WASHINGTON STATE  UNIVERSITY
officeofresearch.wsu.edu

- Recommendations to advance WSU Research:
 - **Be Strategic**
 - **Be Collaborative**
 - **Be Visible**
- Key Outcomes of study
 - **Five Grand Challenges to move WSU strategically to the next level of excellence**
 - **450-page report: compilation of info on WSU Research**
 - **We need *your* comments!**

<https://myresearch.wsu.edu/StudyReportComments.aspx>



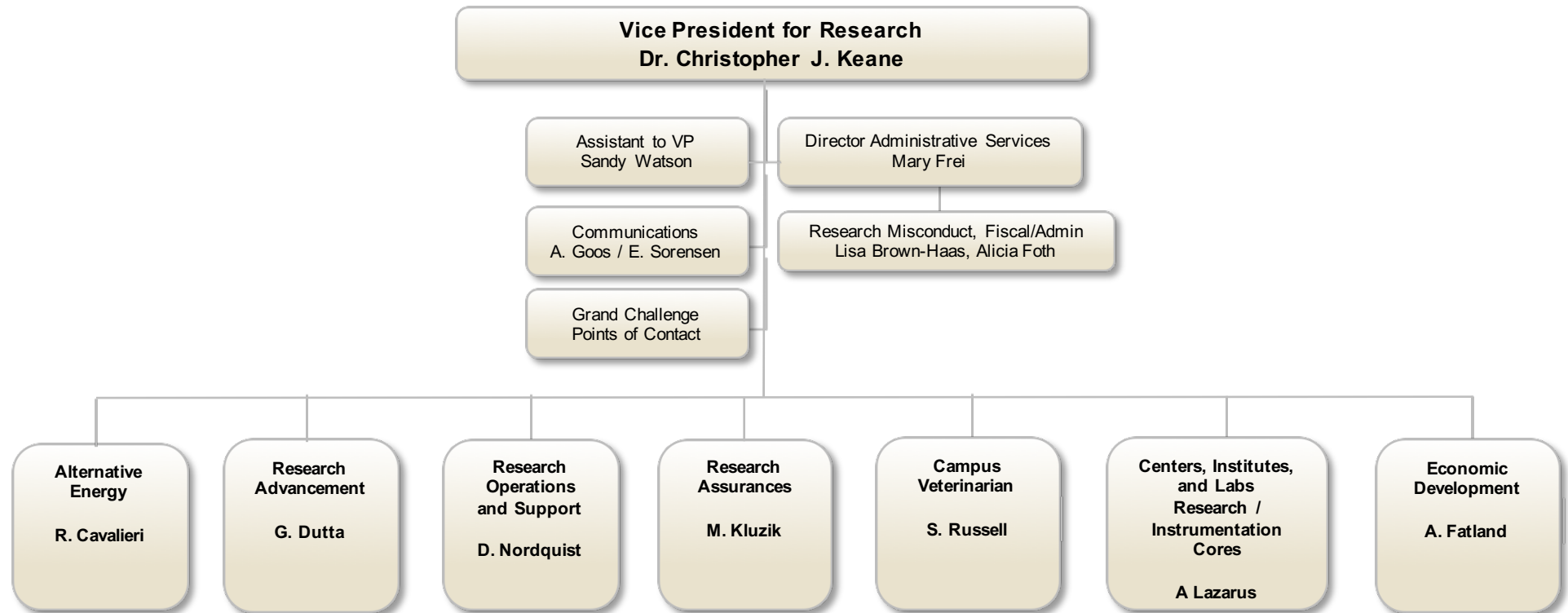
WSU Research Grand Challenges are Inspirational, Multidisciplinary, and Inclusive

- Sustaining Health: The Uncompromising Pursuit of Healthier People and Communities
- Sustainable Resources for Society: Food, Energy, and Water
- Advancing Opportunity and Equity: The Land-grant Mission in Today's World
- Improving Quality of Life through Smart Systems
- Fundamental Research in Support of National Security

**Grand Challenges rollout planned for September 17-18,
as part of the 125th anniversary of WSU**



Office of Research – Working Organization Chart





Office of Research Responsibilities

- Provide vision, strategic direction, and priorities for WSU research
 - Develop and implement WSU Strategic Plan in collaboration with WSU senior leadership team
- Provide policy and general guidance to all WSU campuses and units involved in sponsored research
- Manage system-wide operational activities in support of WSU research
 - Office of Grant Research and Development
 - Office of the Campus Veterinarian
 - Office of Assurances
 - Research Misconduct
 - Communications
 - Institutional performance assessment- development and tracking of metrics
- Advance the WSU research enterprise by developing institutional skill in proposal development and project execution, effective partnership with other WSU offices, fostering collaborations, and other means
- Manage selected Centers, Institutes, and Core Laboratories
- Represent WSU research and the University in internal and external interactions
- Manage WSU's intellectual property through our Office of Commercialization
- Develop strategic partnerships on behalf of WSU with external private entities



Office of Research Top goal list for CY2015

Major goals for upcoming academic year:

- To accelerate the development of a preeminent research portfolio.
- To solicit and increase strategic engagement and interdisciplinary collaboration.
- To increase the visibility, relevancy, and reputation of WSU's research enterprise.
- To improve operations and services to advance the WSU research enterprise.



Office of Grant and Research Development (Research Advancement Unit)

Dr. Geeta Dutta
Office - 335-5980
Email – geeta.dutta@wsu.edu

Research Advancement Unit
Main Line – 335-9661
Email – ogrd@wsu.edu

<http://pmu.wsu.edu>



Office of Research Advancement

Services include:

- Funding search and dissemination - Informer
- Proposal Writing Workshops – next one Oct 1
- Mentored Proposal Writing (Seminar Oct 15)
- Proposal Development Toolbox (MyResearch)
- How-To Brown-Bag Series
- Single investigator proposal support (advice and editing – first come, first serve)
- Large proposal support (from RFP to submission)



Office of Grant and Research Development (Research Operations and Faculty Support)

Dan Nordquist
Office – 335-7717
Email – nordquist@wsu.edu

Research Operations and Faculty Support
Main Line – 335-9661
Email – ogrd@wsu.edu

<http://www.ogrd.wsu.edu>



Office of Grant and Research Development (Research Operations and Faculty Support)

Services include:

- Proposal and Award Processing – Central hub for all submitted proposals and award acceptance (across the system).
- Strategic Initiative Implementation – 120 Day Study, WSU Strategic Plan, other ORED initiatives
- Faculty support and online tools – PI Dashboard, eREX Form, reporting, etc.
- Outreach and Program Support – Proposal writing workshops, event coordination, trainings, etc.



Office of Research Assurances

Mike Kluzik

Office – 335-9553

Email – mkluzik@wsu.edu

Office of Research Assurances

Main Line – 335-7183

Email – mkluzik@wsu.edu

<http://www.ora.wsu.edu>



Office of Research Assurances

Services include:

- Radiation Safety Office/Radiation Safety Committee
- IACUC (Institutional Animal Care and Use Committee)
- IBC (Institutional Biosafety Committee) and Biological Safety
- IRB (Institutional Review Board)
- Export Controls
- Conflict of Interest
- Responsible Conduct of Research
- Additional Regulations (DOT/FAA/OFAC/...)



Office of the Campus Veterinarian

Dr. Steven Russell

Office – 335-2023

Email – steven.russell@wsu.edu

Office of the Campus Veterinarian

Main Line – 335-6246

Email – or.ocv.alert@wsu.edu

<http://campusvet.wsu.edu>



Who we are and what we do in 5 words:

It's all about the animals





Office of the Campus Veterinarian:

Services include:

- Veterinary care
- Procedural technique training
- Disease testing
- IACUC Protocol consultation
- Services for hire
- And more!



Centers, Institutes, and Labs Research / Instrumentation Cores

Dr. Andrea Lazarus
Office – 509-358-7525
Email – andrea.lazarus@wsu.edu



WSU Research/Instrumentation Cores

- Center for Biomolecular X-Ray Crystallography
- Center for Nuclear Magnetic Resonance
- Franceschi Microscopy and Imaging Center
- Molecular Biology and Genomics Core
- Stable Isotope Core
- Tissue Imaging and Proteomics Laboratory
- Flow Cytometry Core
- Washington Animal Disease Diagnostic Lab

Non-Instrumentation Cores:

- High Performance Computing
- Social and Economic Sciences Research Center



Economic Development

Dr. Anson Fatland
Office – 206-428-3020
Email – ansonf@wsu.edu

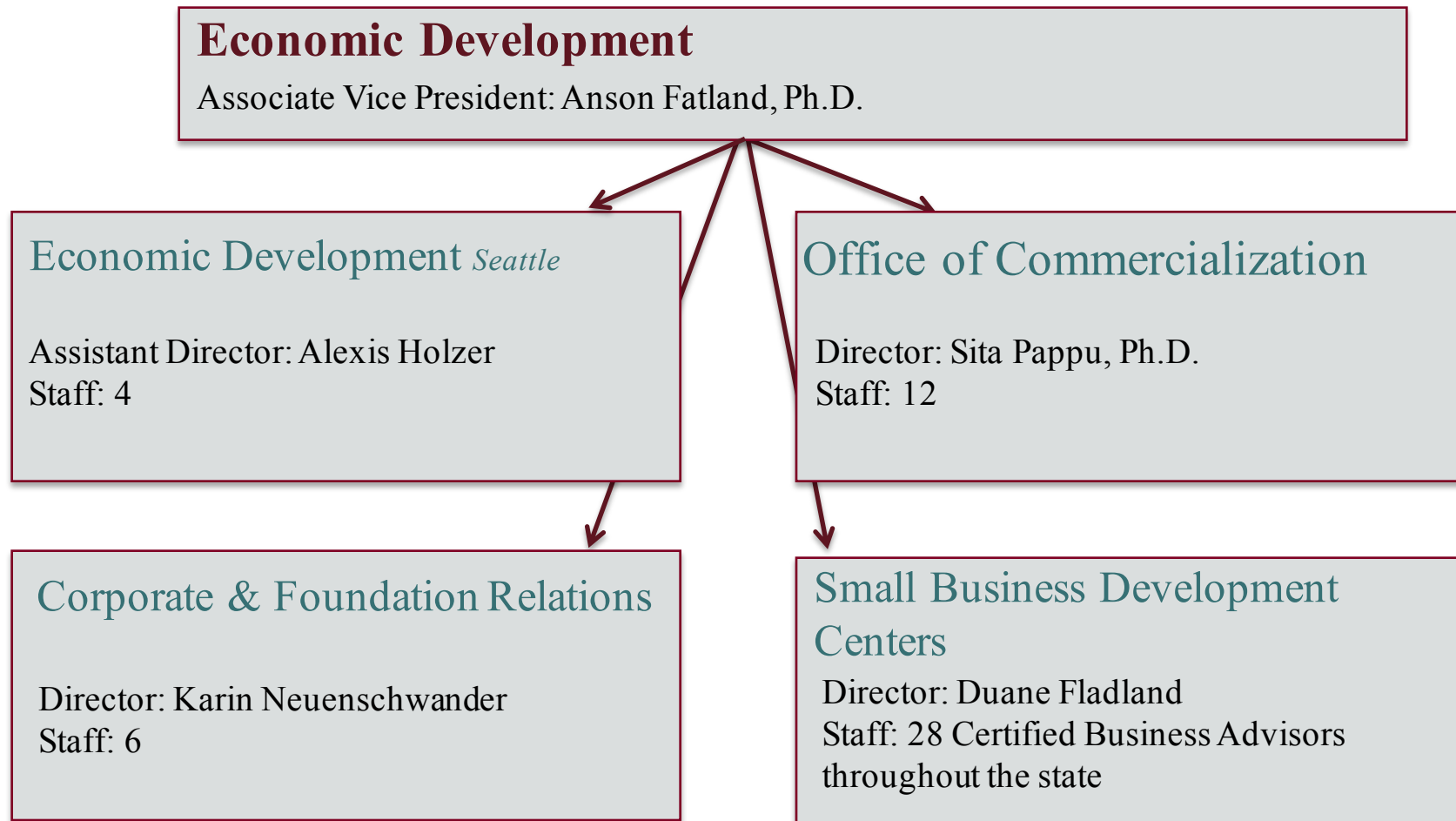
Economic Development
Main Line – 206-219-2420
Email – wsu.ecodevo@wsu.edu

<http://economicdevelopment.wsu.edu>



Economic Development

Four Offices Sharing the Vision





Office of Commercialization

1,950
PATENTS

350
LICENSES

\$10M
INCOME

\$6M+
SEED FUNDING

Traditional Measurements

- Disclosures
- Patents
- Licenses
- Spinouts
- Revenue

Non-Traditional Measurements

- Faculty engagement
- Student participation
- Economic impact



**Good luck in all your research, creative
and scholarly endeavors!**