

# Welcome

WSU **125**

EST 1890



# Today's Objectives

- Welcome to Washington State University
- What is Washington State University?
- Key people and services
- Keys to a successful start
- Networking



# WSU 125

EST 1890













# Washington's Land Grant University



Education



Scholarship



Service



# The Morrill Acts (1862 and 1890)

Universities that teach “agriculture, military tactics, and the mechanic arts” as well as classical studies so “members of the working classes could obtain a liberal, practical education...that has direct relevance to their daily lives.”





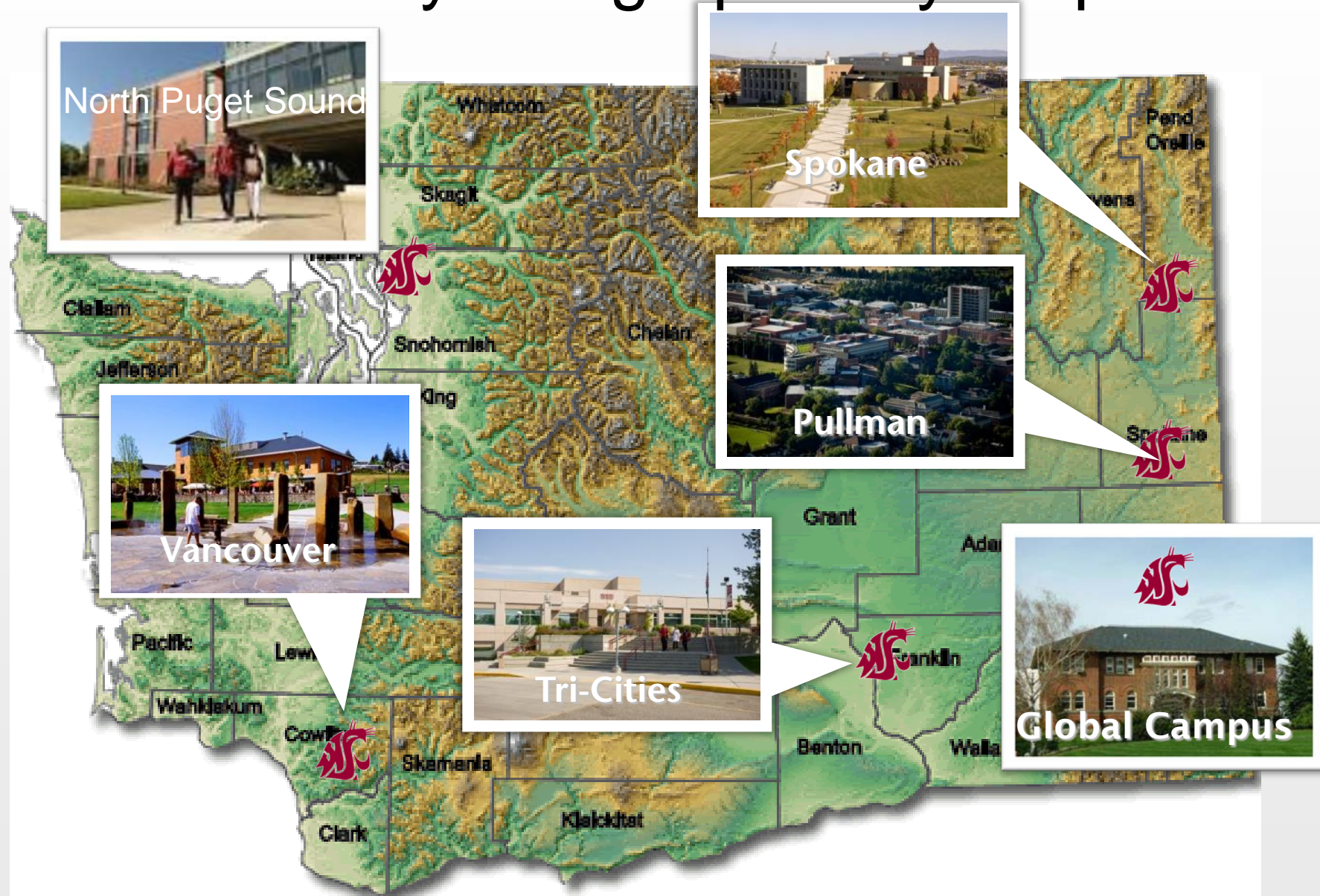


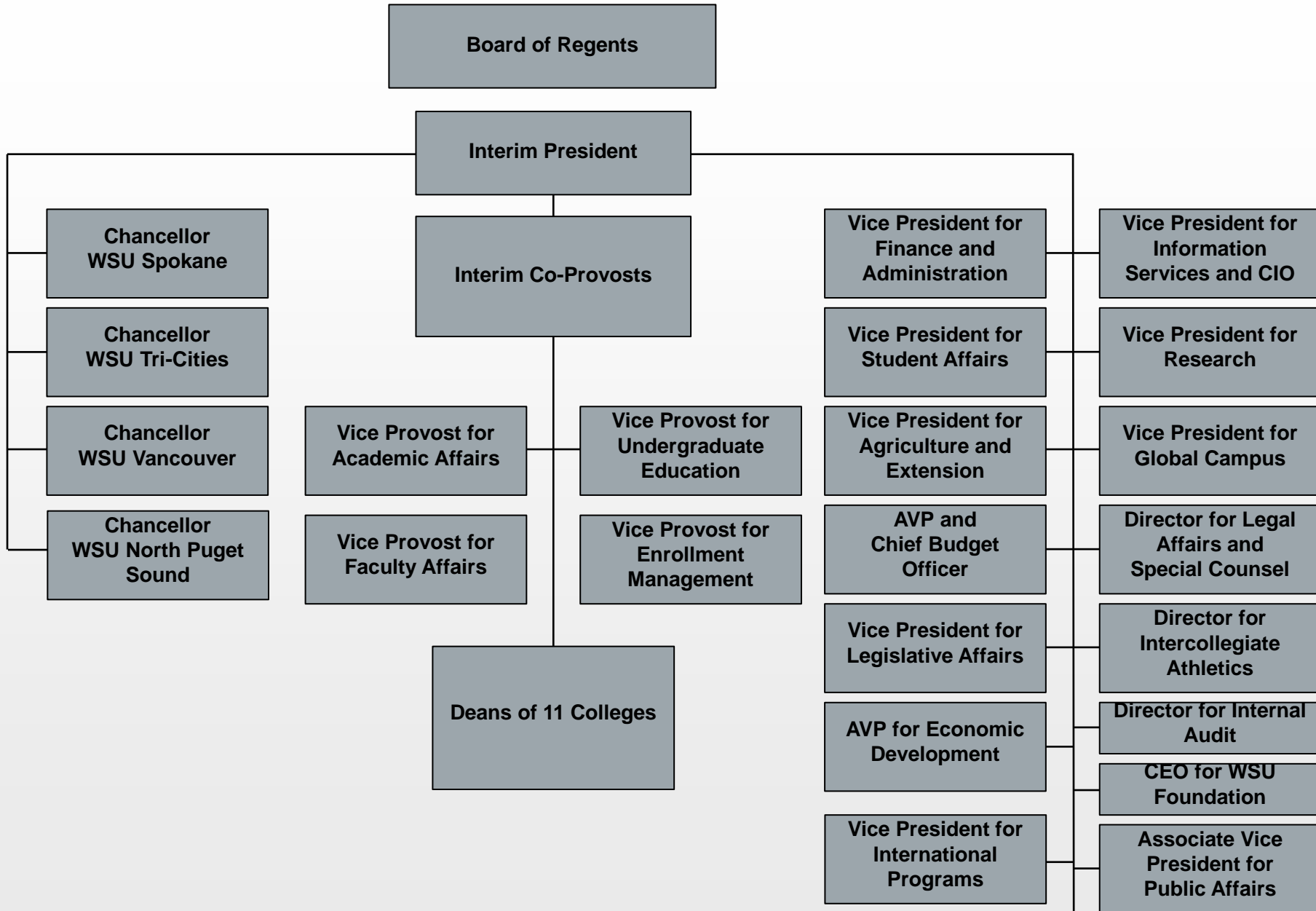






# One University Geographically Dispersed









# Interim President Daniel J. Bernardo





# Interim Co-Provosts





# Our Colleges

Agricultural, Human, & Natural  
Resource Sciences (CAHNRS)

Arts & Sciences (CAS)

Carson College of Business (CCOB)

Communication (Murrow)

Education (COE)

Honors (HC)\*

Medical Sciences

Nursing (CON)

Pharmacy (COP)

Veterinary Medicine (CVM)

Voiland College of Engineering &  
Architecture (VCEA)



# Our Programs

- 95 Undergraduate Majors
- 100 Certificate Programs
- 120 Graduate and Professional
- 47 Doctoral degrees





# Faculty Senate

## Representing our 2300 Faculty



**Richard  
Zack,**  
*Chair*  
(Entomology)



**Sheila  
Converse**  
*Executive Secretary*  
(Music)





# 2014 Enrollment

Location	Number
Spokane	1,458
Tri-Cities	1,426
Vancouver	3,264
Everett	78
Global Campus Online	2,794
Pullman	19,756
Total	28 686

27% Minority and 7% International



# New Students

- Expect 4600 new freshmen\*
- Expect 2600 new transfers\*
- 30% More from out of state
- 38% Underserved population
- 3.30 Average high school GPA

\*includes all campuses





# Associated Students of WSU (ASWSU)



Kyle Geiger  
Vice President

Adam Crouch  
President



# Graduate & Professional Students Association (GPSA)



Melanie Thornton  
President



Eva Denka  
Vice President





# World Class Research







# Areas of Preeminent Research & Scholarship

- Advanced materials technology
- Chromosome biology and the science of reproduction
- Clean energy technologies
- Infectious diseases at the human–animal interface
- Brain, behavior, and performance
- Molecular plant science and genetics



# Paul G. Allen Center for Global Animal Health



# Biotechnology/Life Sciences





# Tri-Cities Wine Science Center





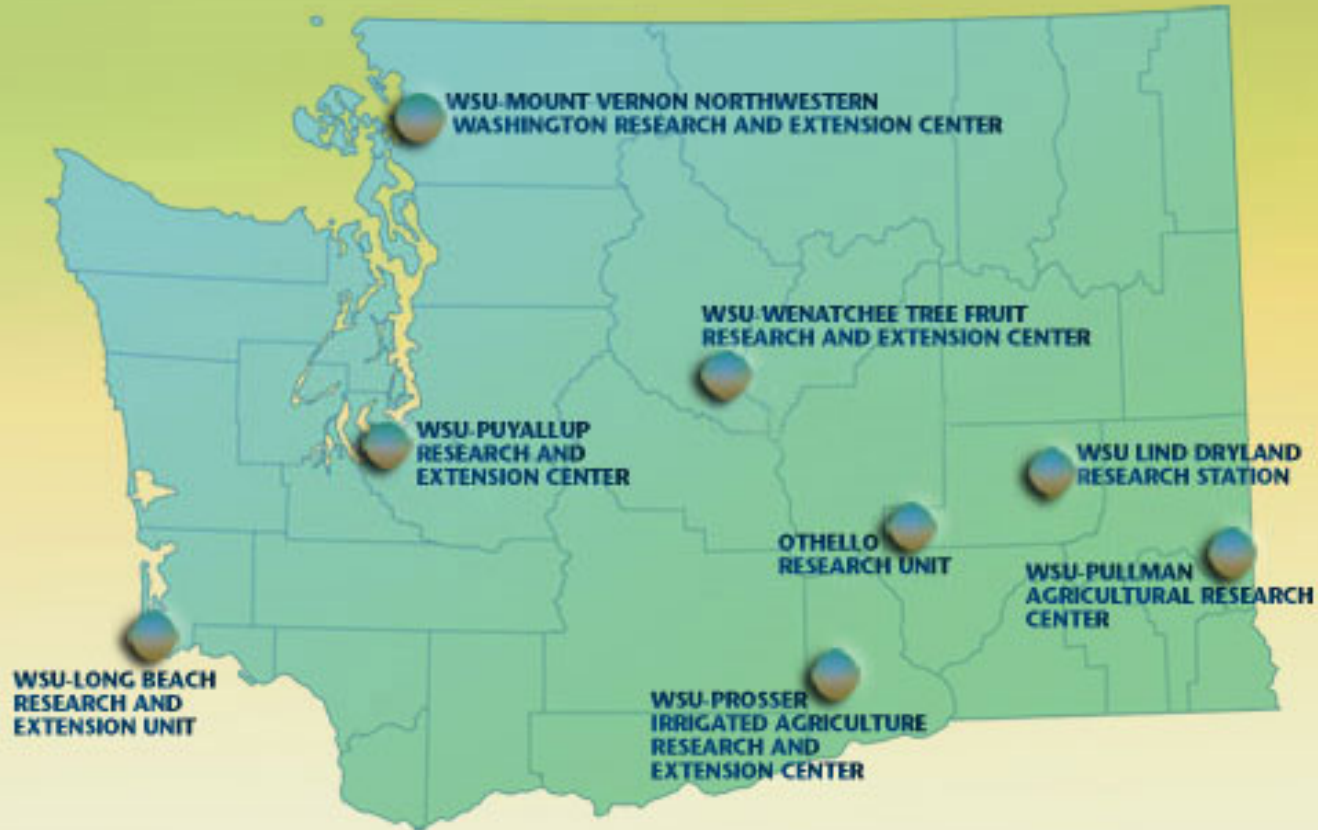
## WSU Extension County Offices







## Research and Extension Centers/Units





# Billion Dollar Success

*Campaign for WSU*

AS OF JUNE 30, 2015

**\$1,065,091,919**





# Our Vision

To be one of the nation's leading land-grant universities, preeminent in research and discovery, teaching and engagement.





# Strategic Plan Themes

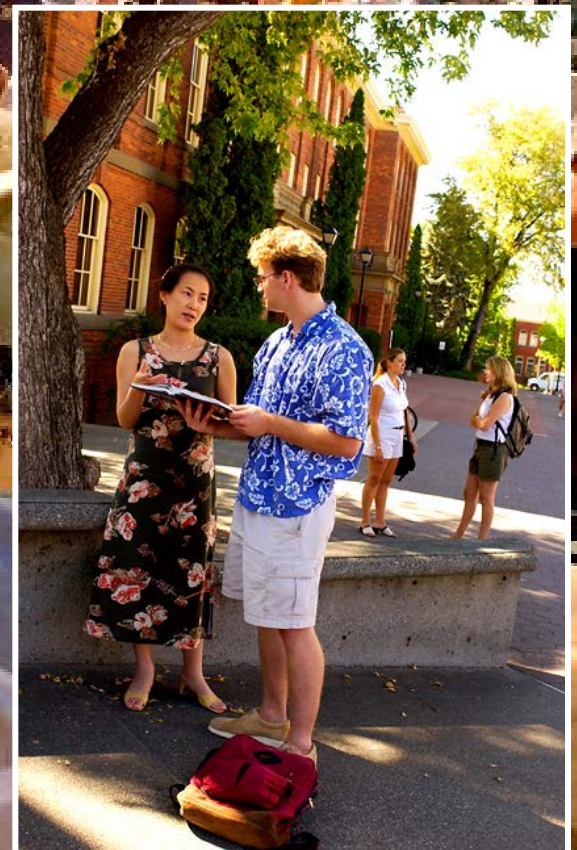
- **Exceptional Research, Innovation, and Creativity**
- **Transformative Student Experience**
- **Outreach and Engagement**
- **Institutional Effectiveness: Diversity, Integrity and Openness**



# Pullman Student Life











# Clubs for Any Interest







# Fraternities and Sororities







# Student Recreation Center





# PAC-12 Varsity Sports



- Baseball
- Basketball
- Cross Country
- Football
- Golf
- Rowing
- Soccer
- Swimming
- Tennis
- Track and Field
- Volleyball



Schedules online at [wsucougars.com](http://wsucougars.com)





# Entertainment

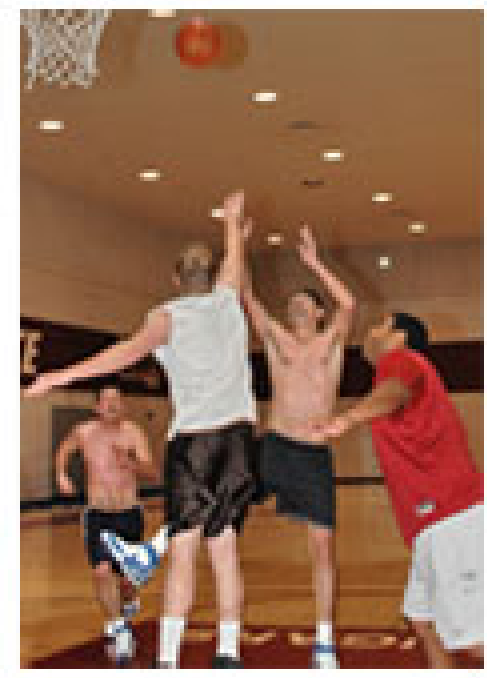
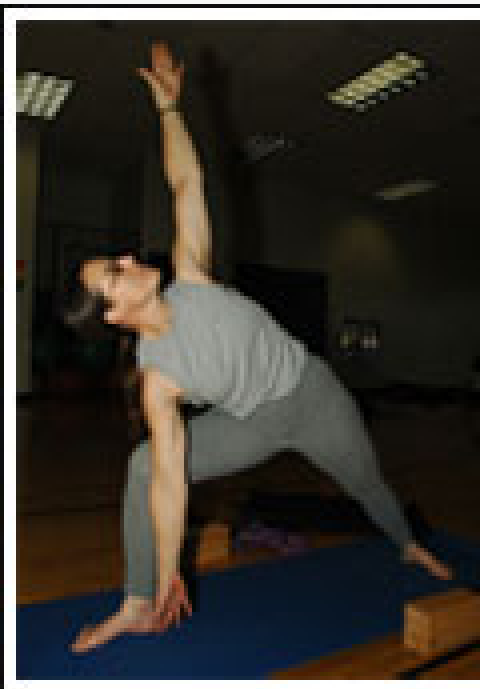
- Prominent Speakers
- Cultural Activities
- Special Events
- Live Performances





# Faculty Fitness Program

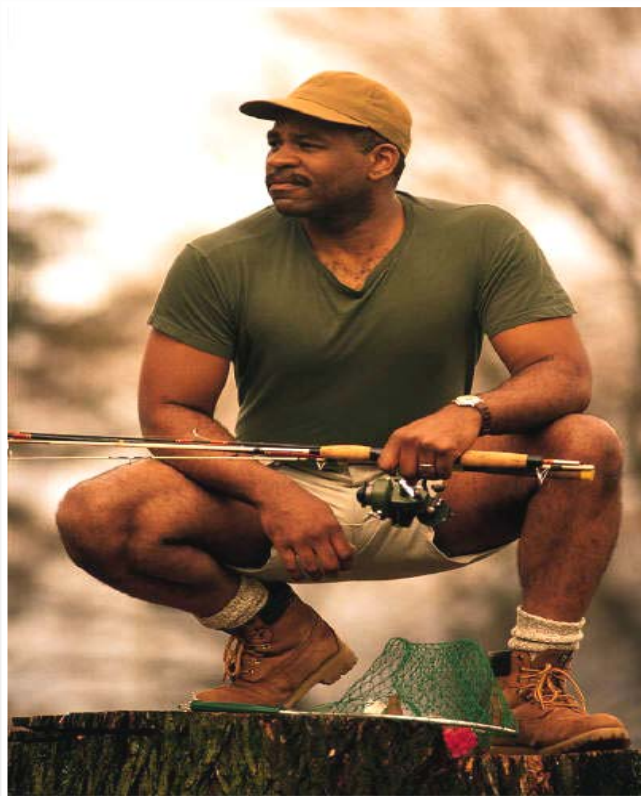
Sign up at <http://facultystafffitness.wsu.edu>







# Regional Activities





# Get Involved

- Be proactive
- Talk about your research with colleagues
- Talk about your teaching
- Get out of your office or lab
- Find a social connection



# Faculty Groups

## **Multicultural Faculty Groups**

(Coalition of Faculty and Staff of Color)

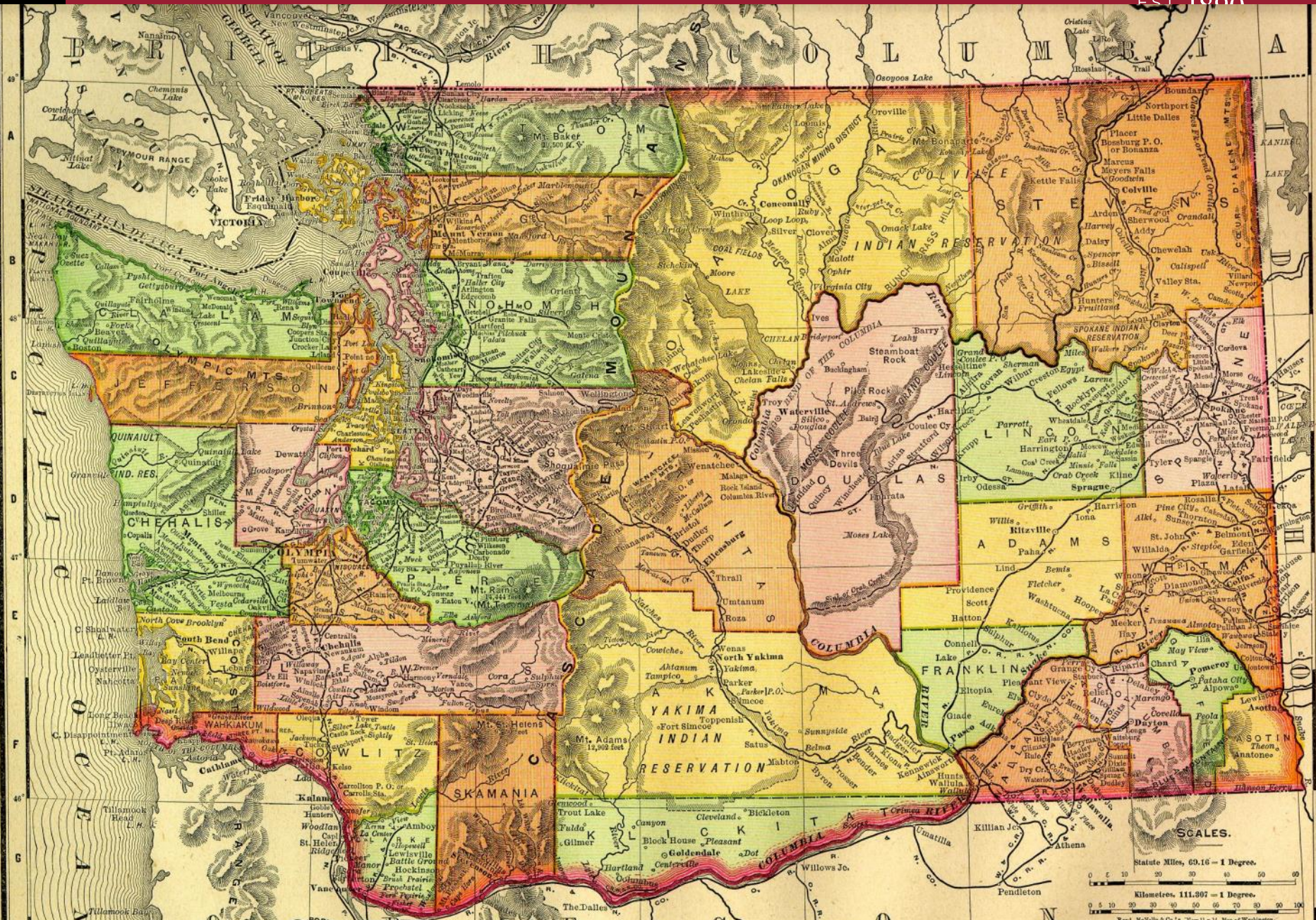
- African American Faculty and Staff Association
- Asian American and Pacific Islander Faculty and Staff Association
- Chicana/o Latina/o Faculty and Staff Association
- Native American Faculty, Staff and Administrative Professional Staff Association

**Association for Faculty Women**

**Faculty Association for Scholarship & Research**

**Association of Faculty for Diversity**





Statute Miles, 69.16 - 1 Degree.  
 Kilometers, 111.307 - 1 Degree.  
 Rand McNally & Co.'s New 11 x 14 Map of Washington.  
 Copyright, 1903, by Rand, McNally & Co.





**WSU 125**

EST 1890





# We Are WSU

- **a worldwide reputation**
- **internationally recognized scholars**
- **solving global problems**
- **preparing students to thrive**
- **contributing to the physical, artistic, scientific, and economic well being of the world**

